

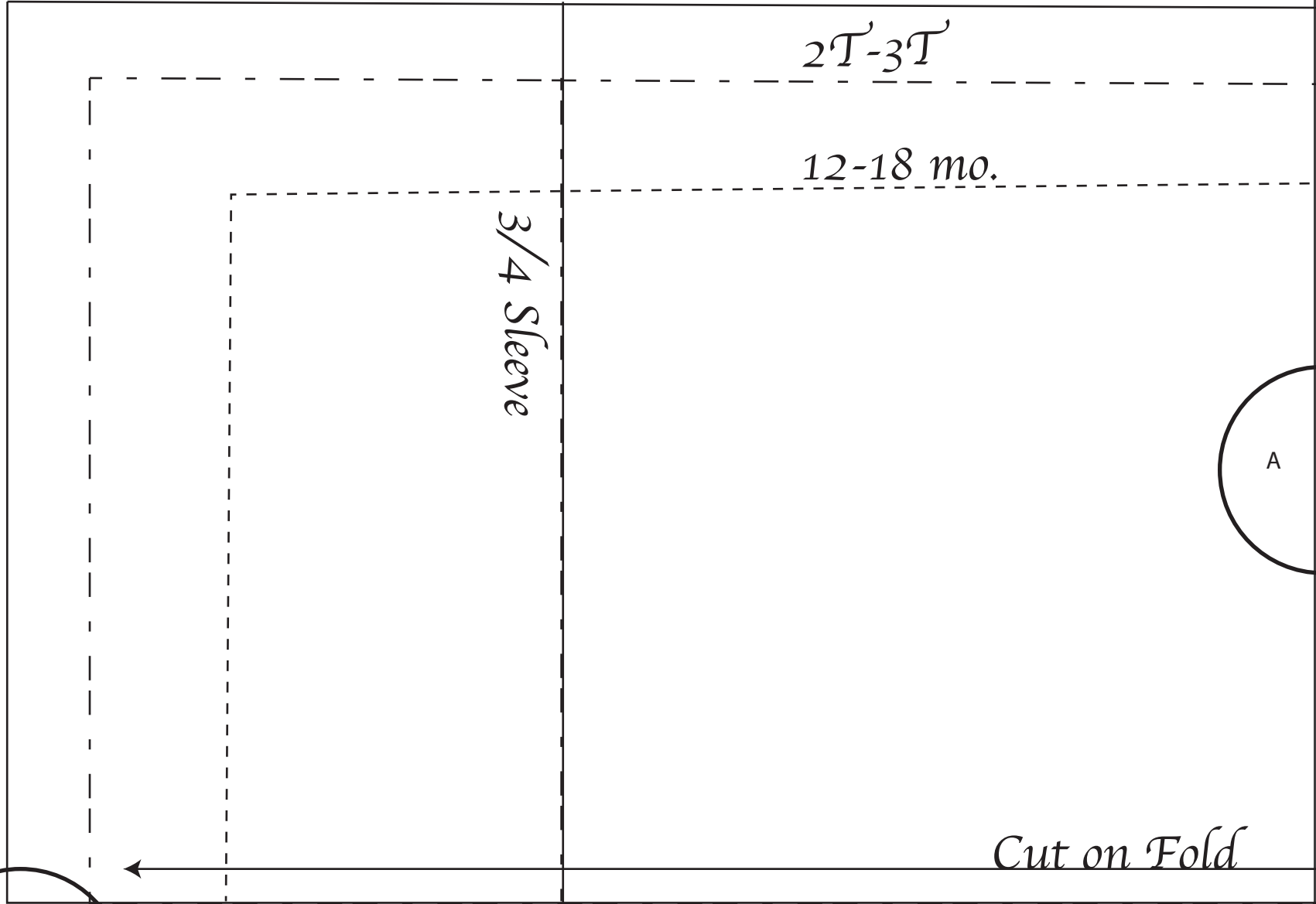
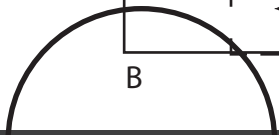
$4T$

$2T-3T$

12-18 mo.

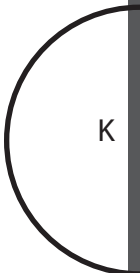
$3/4$ Sleeve

Cut on Fold



B

A

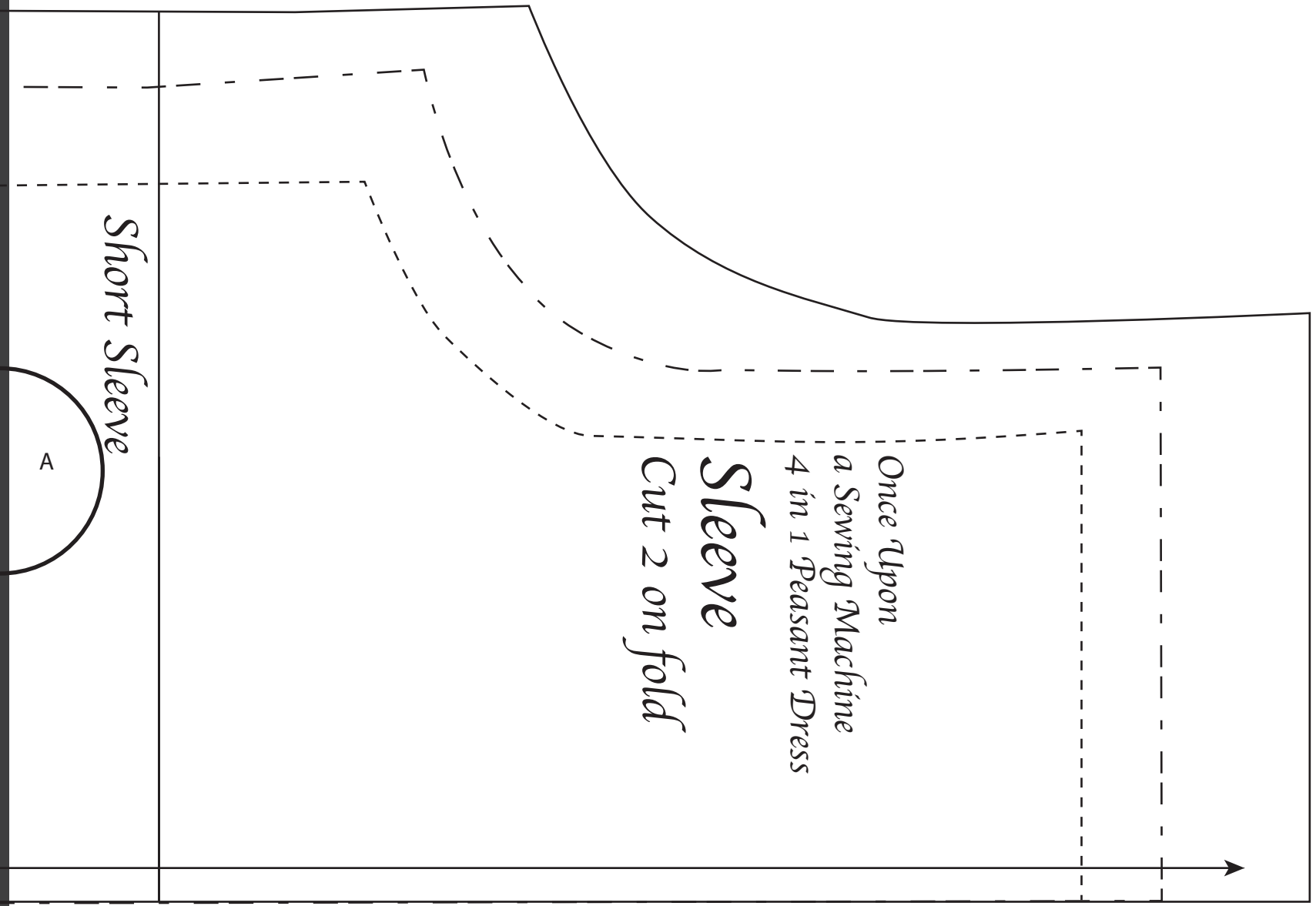


K

Once Upon
a Sewing Machine
4 in 1 Peasant Dress
Sleeve
Cut 2 on fold

Short Sleeve

A



B

C

$4T$

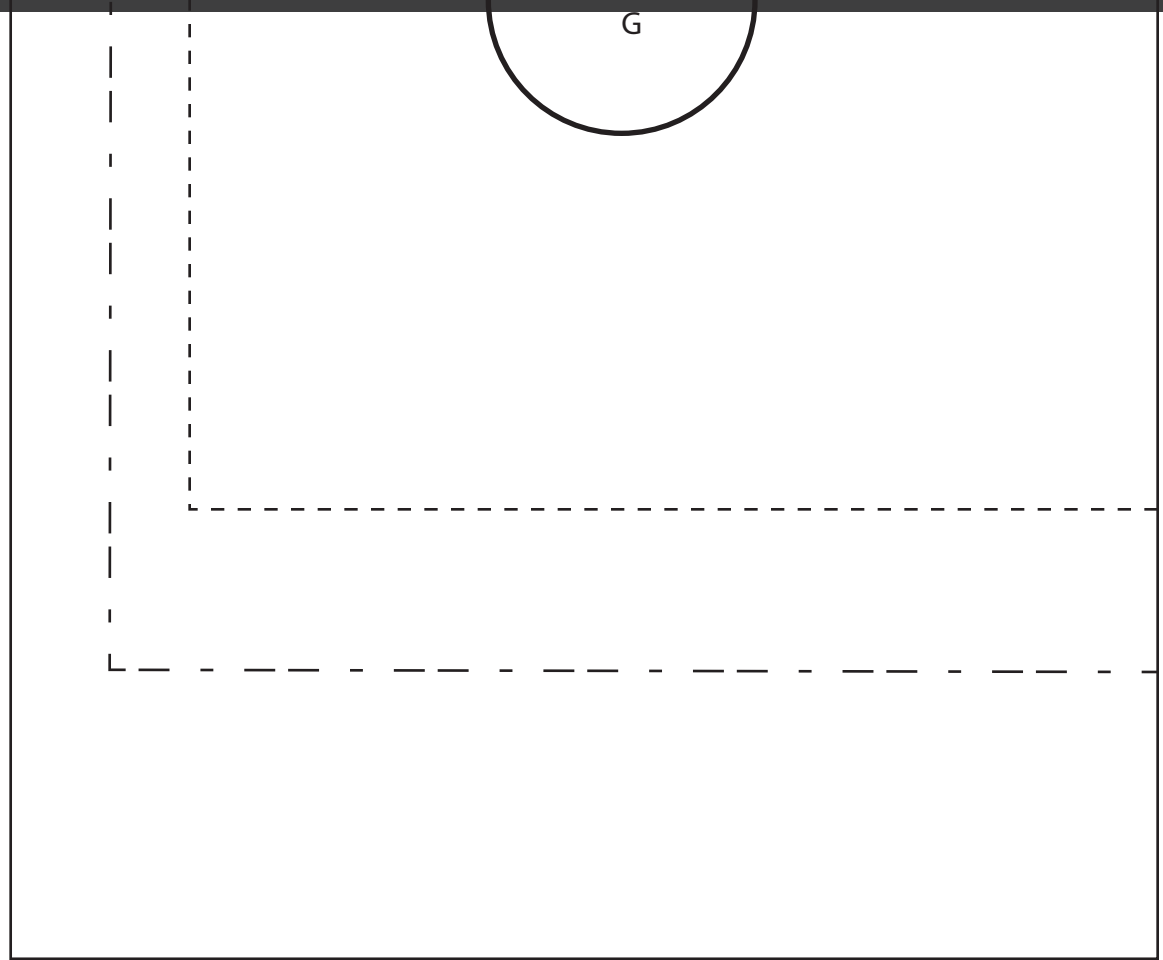
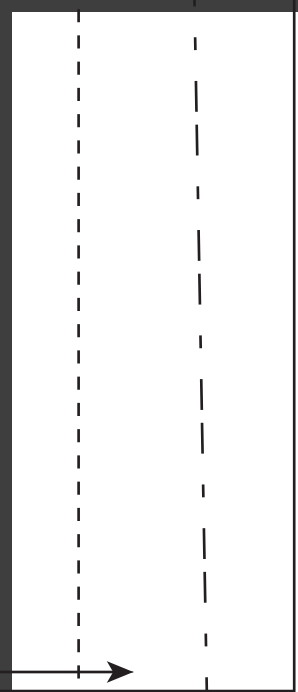
$2T-3T$

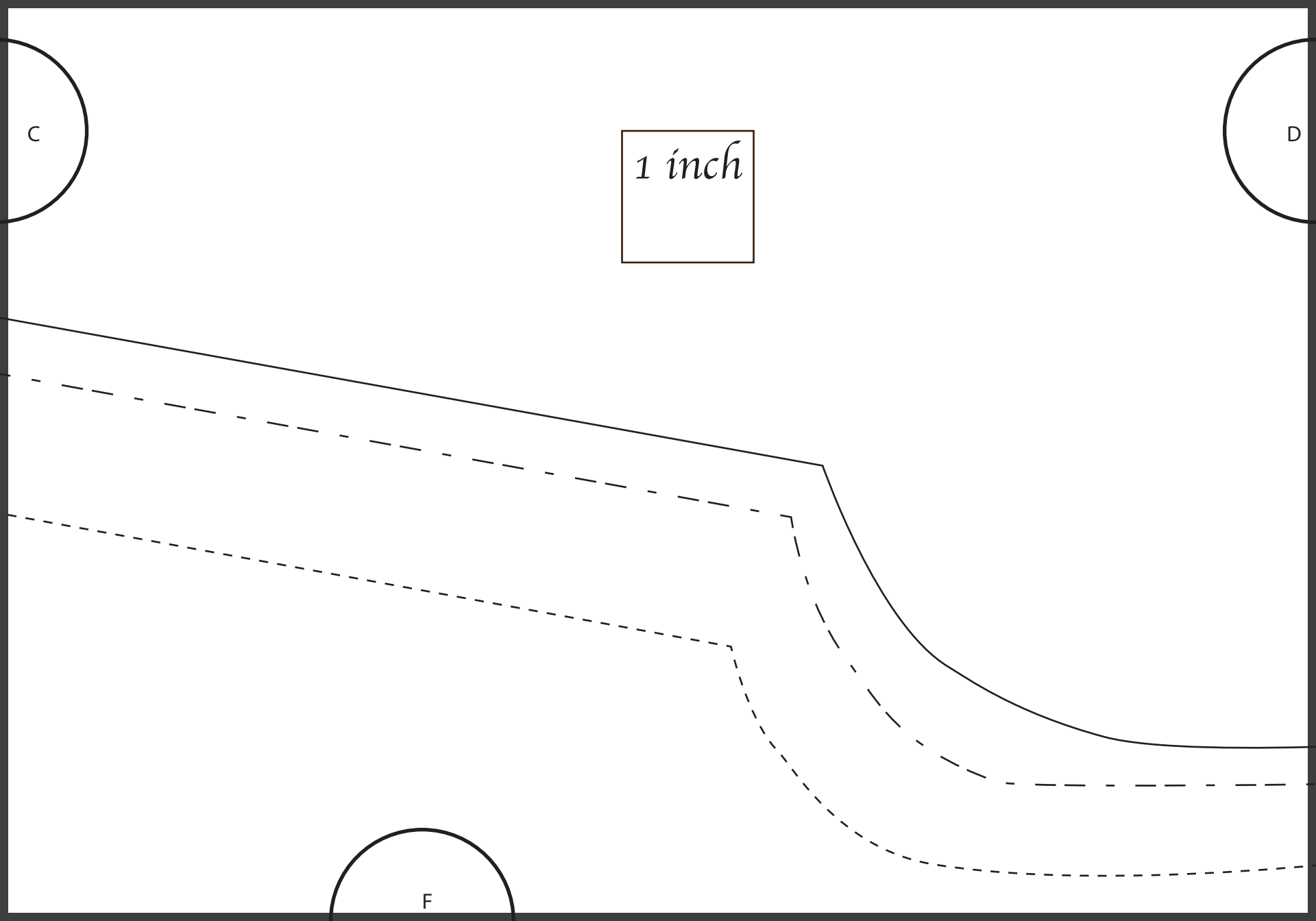
12-18 mo.

Tunic Length

Shirt Length

E





C

D

1 inch

F

Once Upon a Sewing Machine
4 in 1 Peasant Dress

Optional Neck Ruffle

Cut 1 on fold

12 - 18 mo.

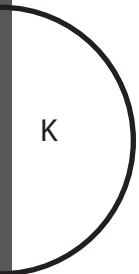
2T-3T

4T

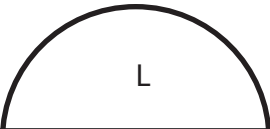
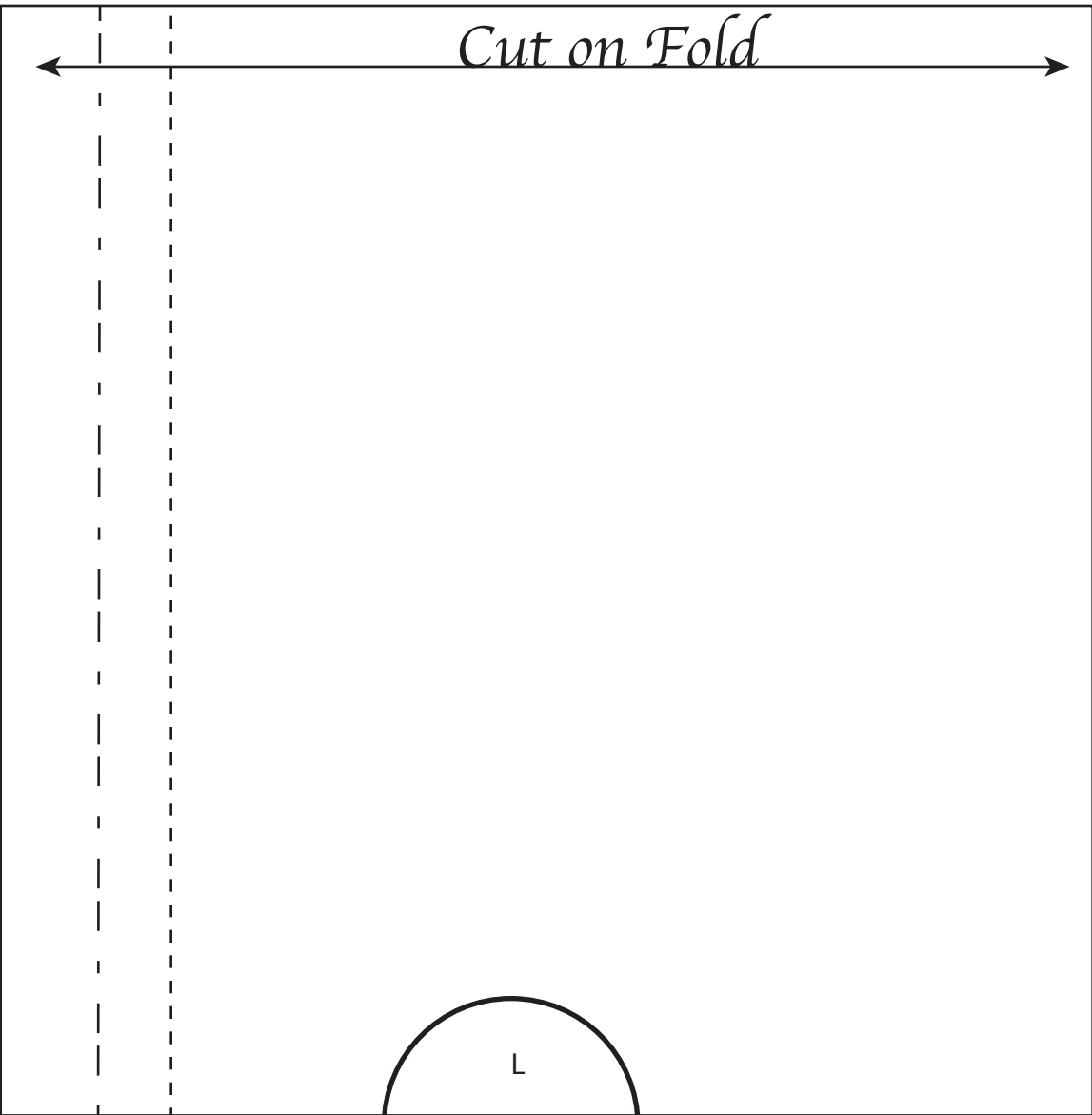
We hope you enjoy your new pattern!
Please visit
[http://www.onceuponasewingmachine.com/
peasant-dress-tutorials/](http://www.onceuponasewingmachine.com/peasant-dress-tutorials/)
to find your tutorials on construction.

D

G



4T _____
2T-3T - - - - -
12-18 mo.



E

H



Once Upon a Sewing Machine
4 in 1 Peasant Dress

Front/Back
Cut 2 on fold

F

J

Cut on Fold

H