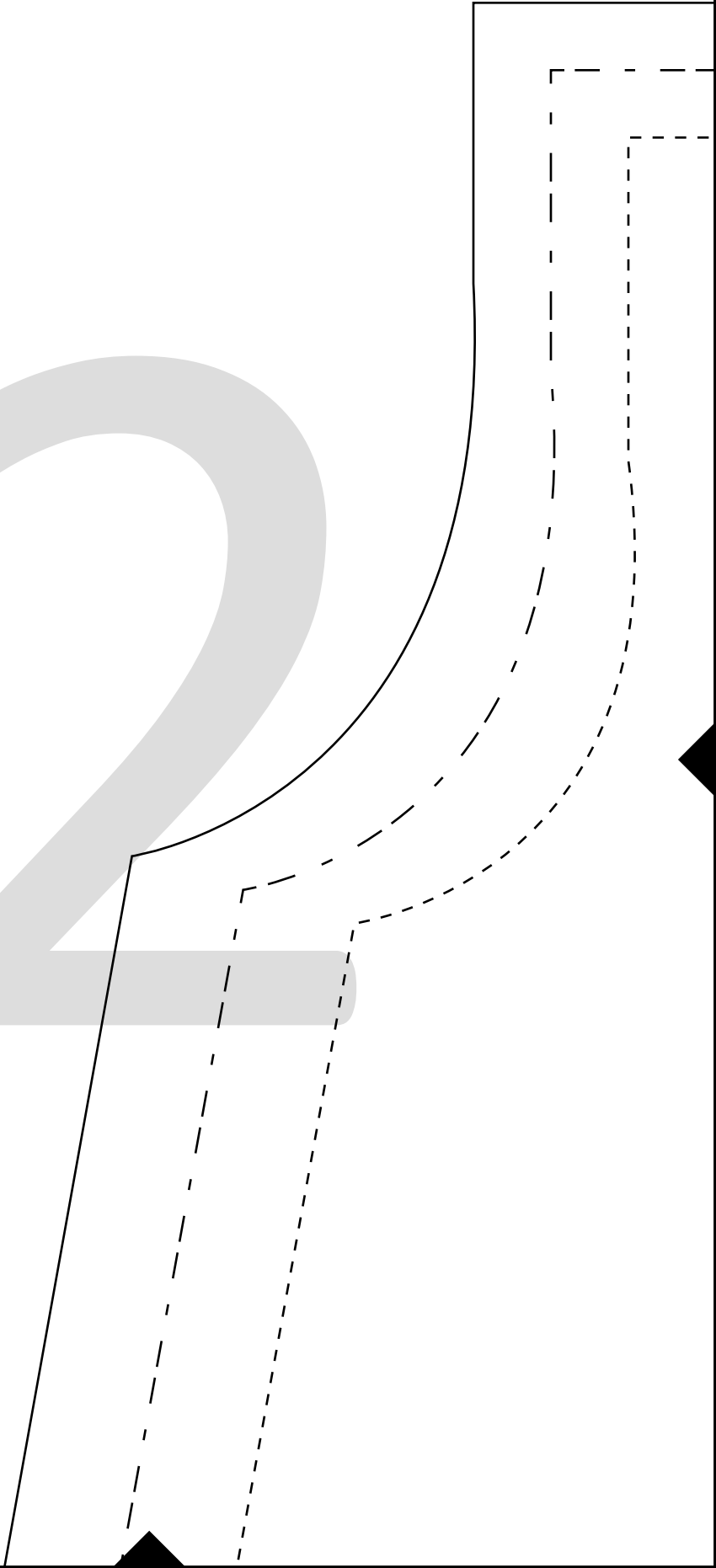
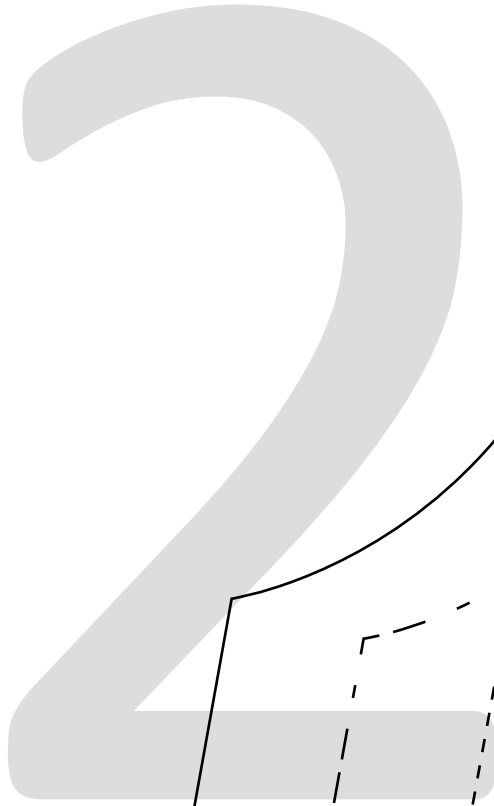


Short

Peasant Dress

Sleeve





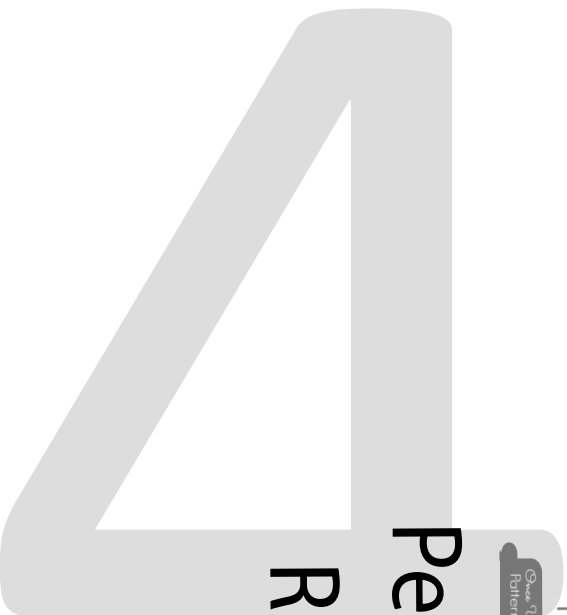


# Peasant Dress Front and Back Cut 2

Cut on Fold



# Peasant Dress Ruffle Neck Cut 1



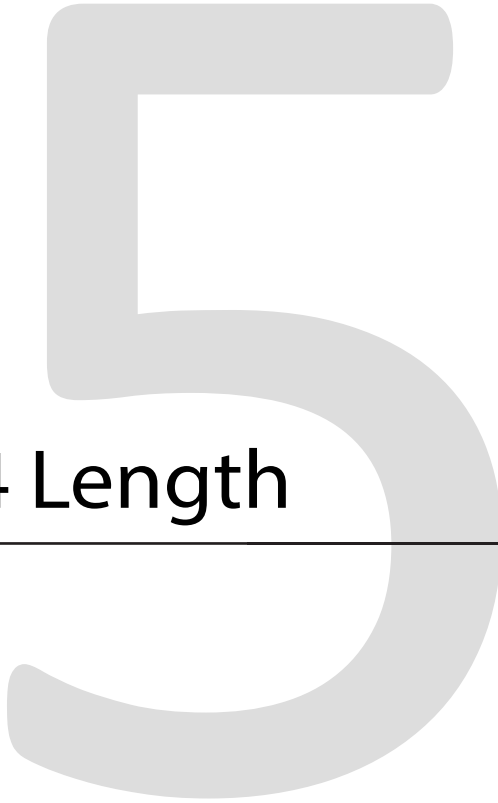
Cut on Fold

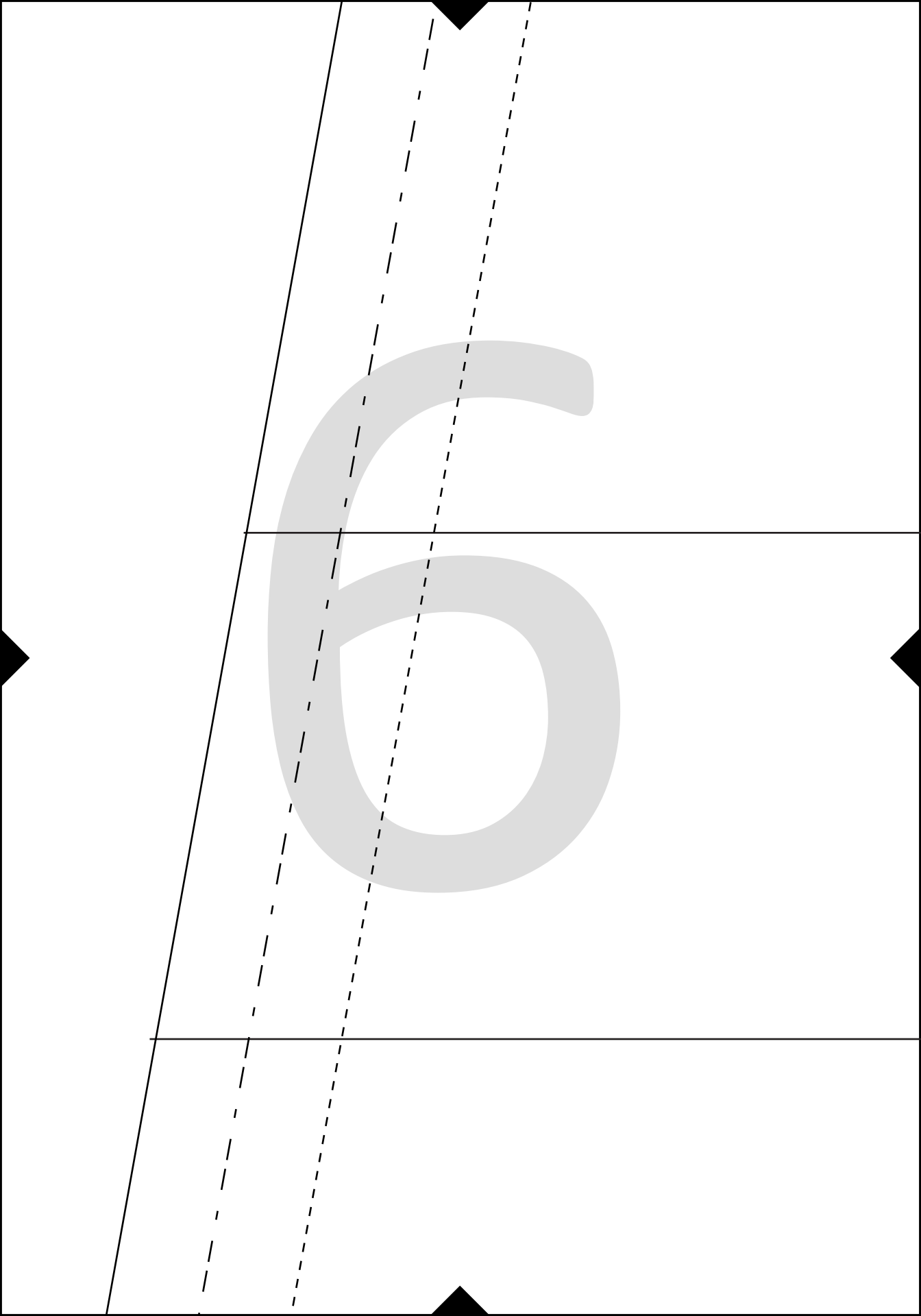


Cut 2

Cut on Fold

3/4 Length



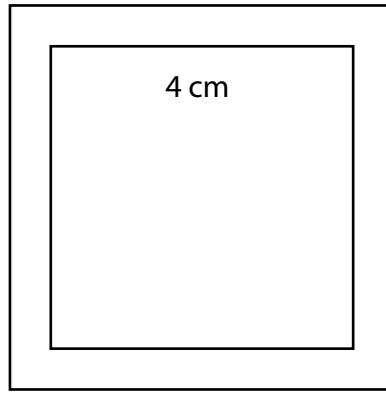




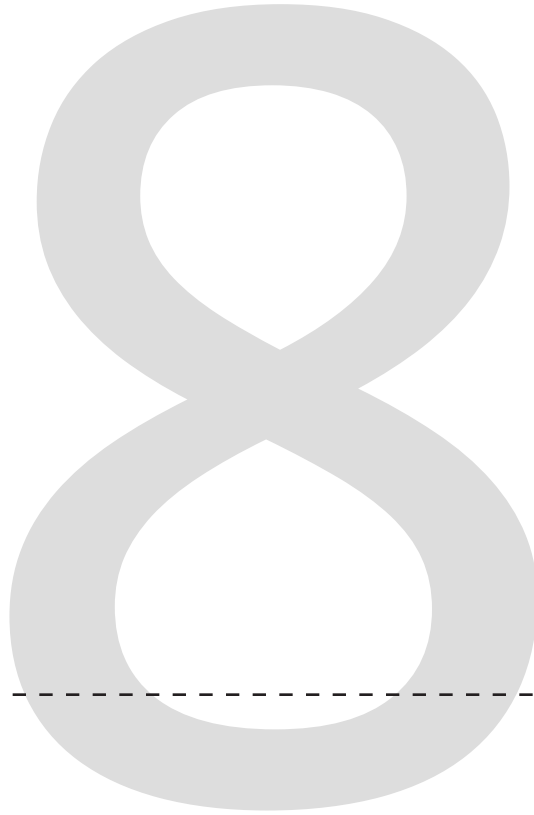
Shirt

Tunic


2 inch



4 cm

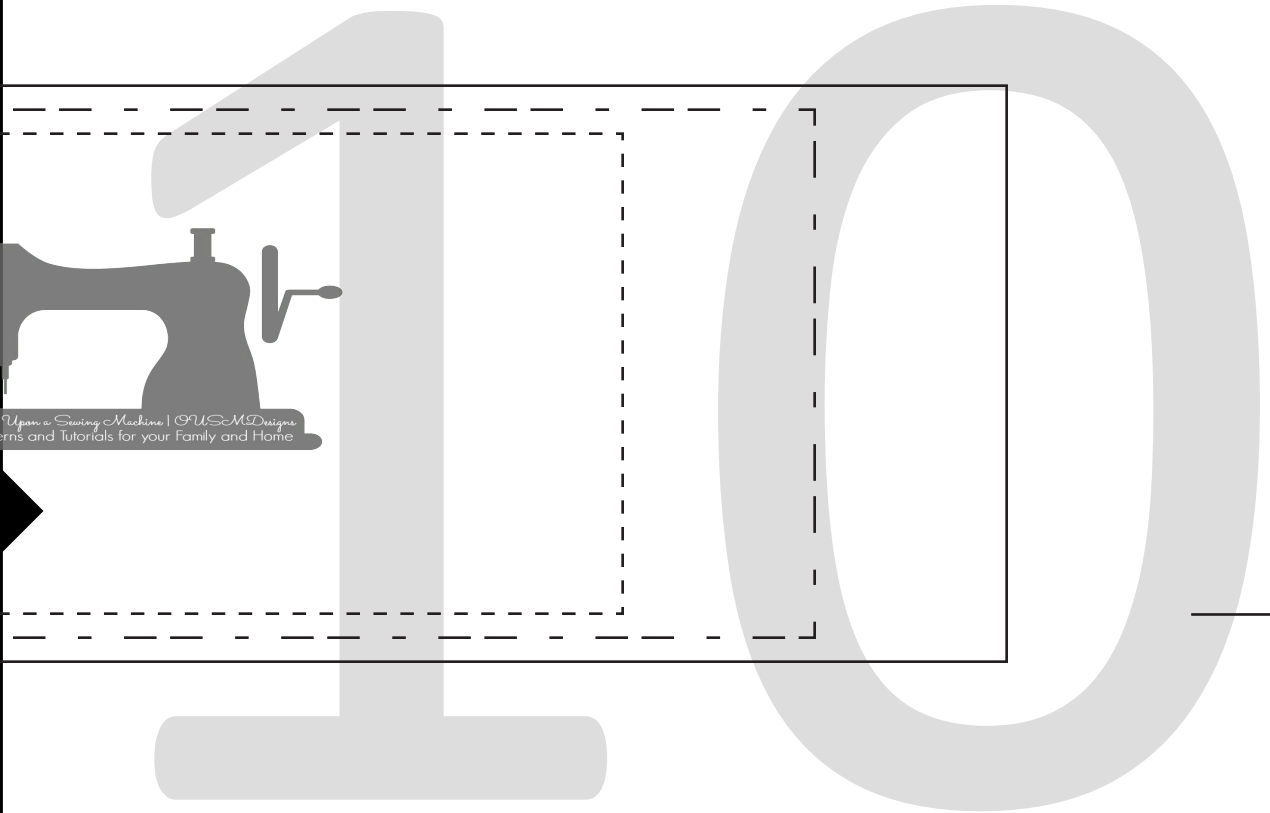






Peasant Dress  
Flutter Sleeve  
Cut 2

# Dress



Upon a Sewing Machine | US-M-Designs  
Patterns and Tutorials for your Family and Home